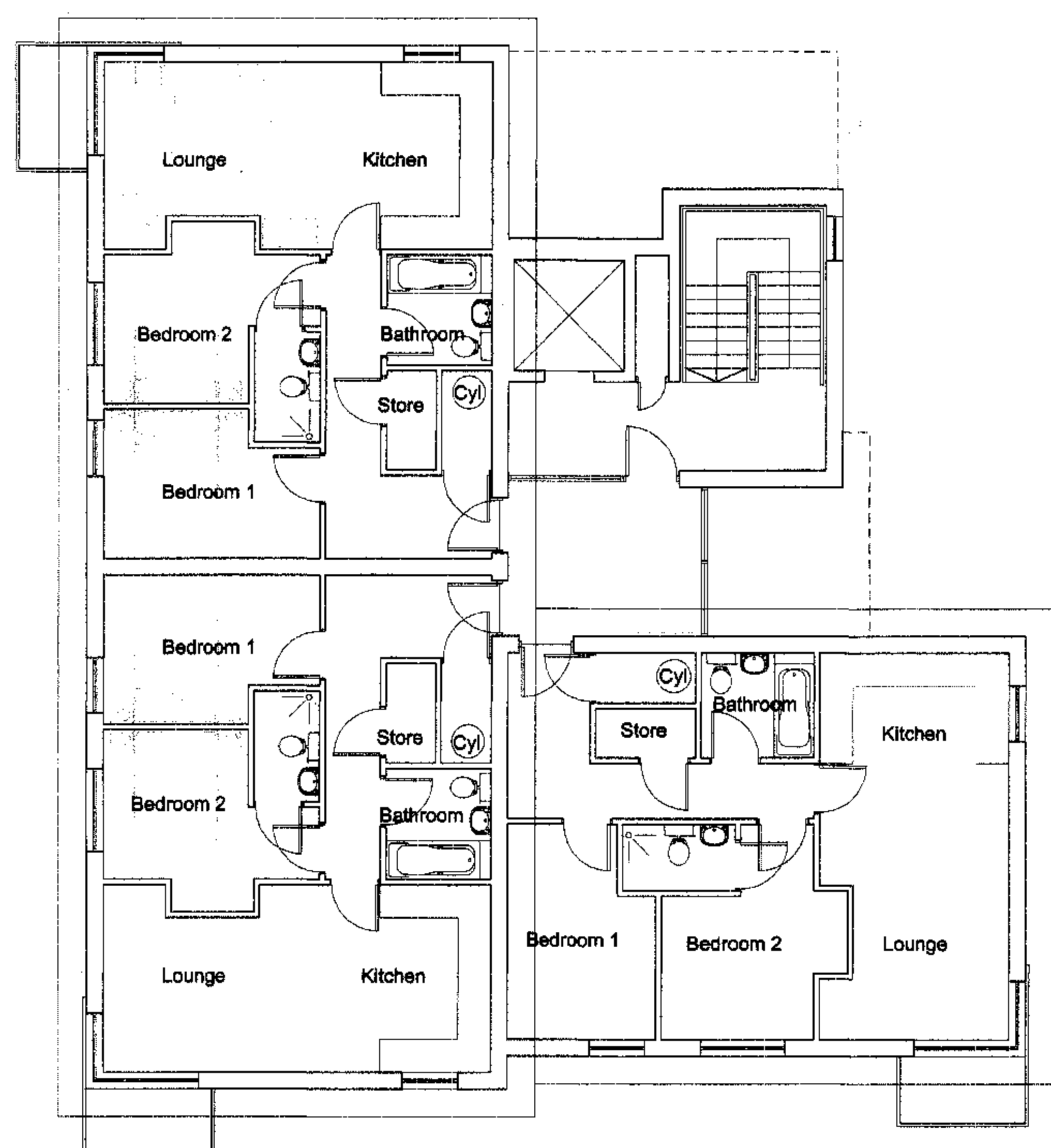


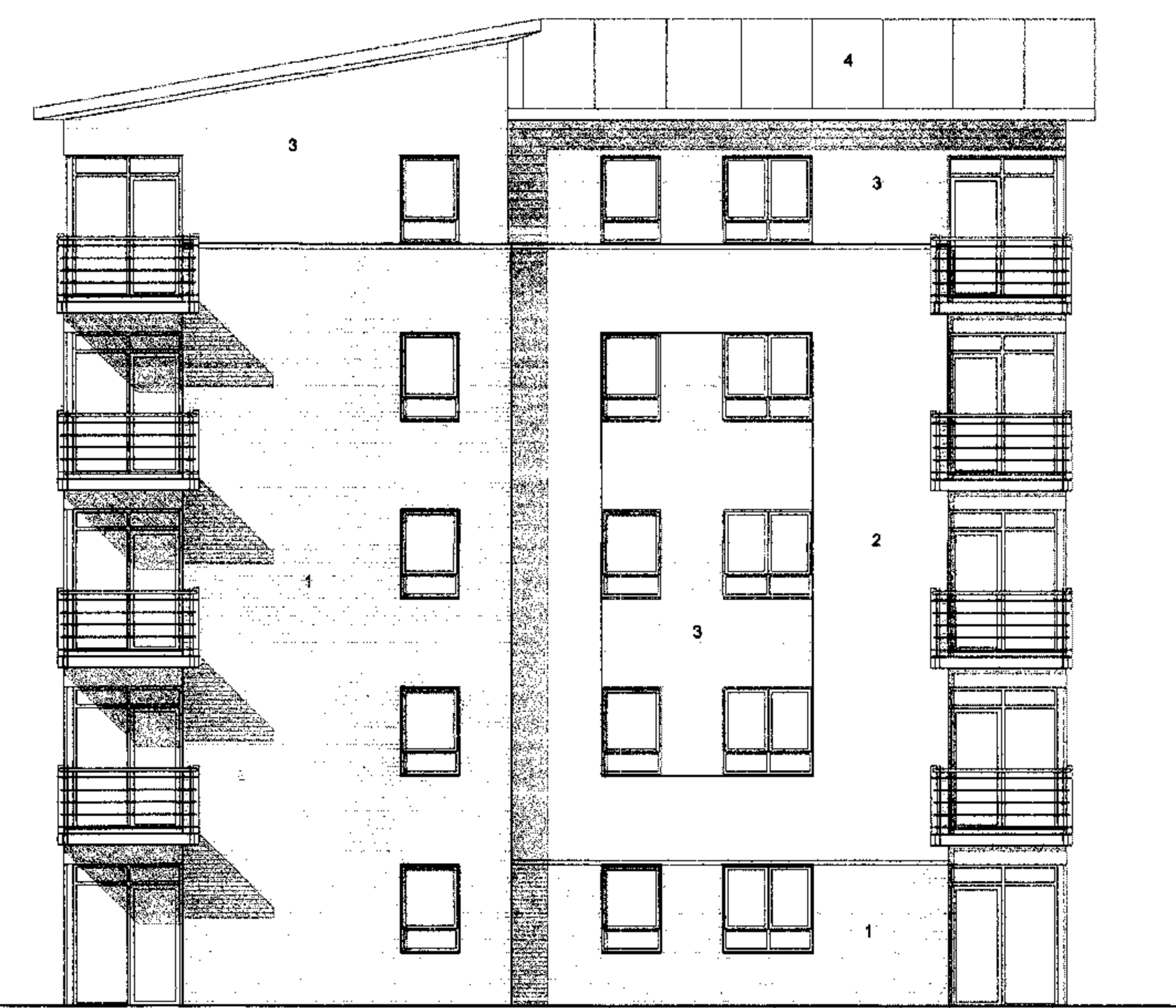
GROUND FLOOR PLAN



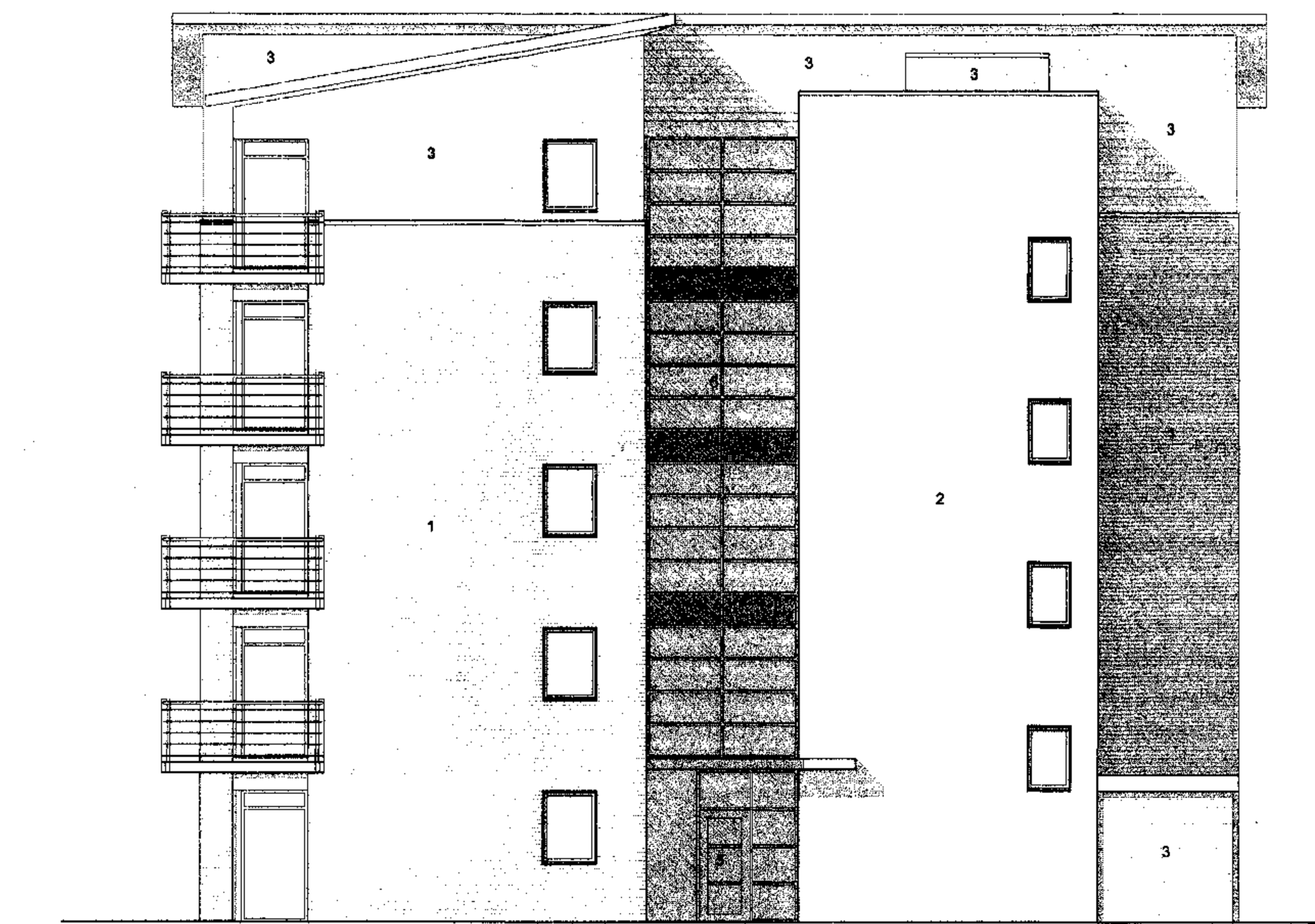
FIRST TO FOURTH FLOOR PLAN



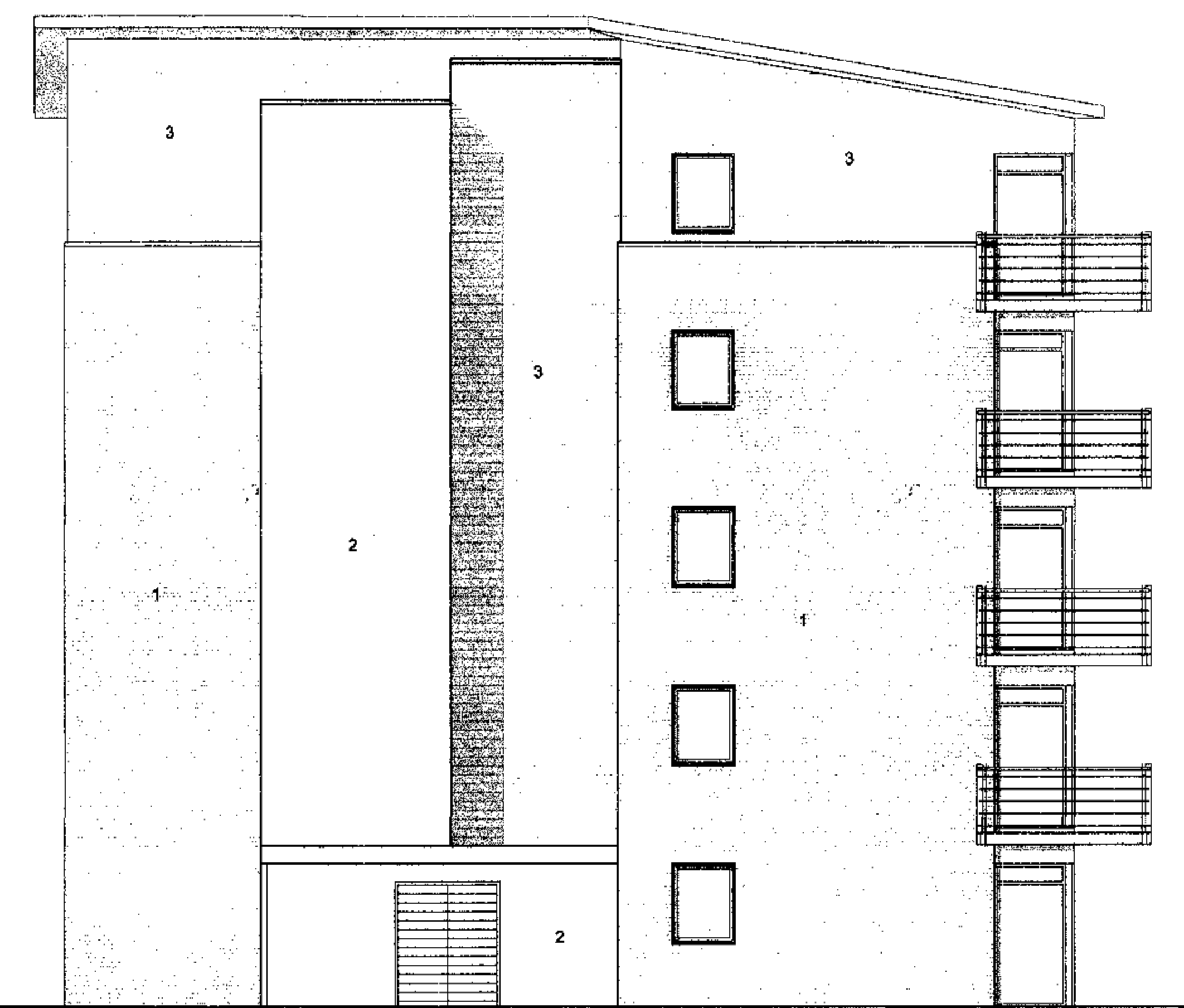
EAST ELEVATION



NORTH ELEVATION



WEST ELEVATION



SOUTH ELEVATION

- Materials**
- 1 Facing Brick
  - 2 Render
  - 3 Cedar Cladding
  - 4 Insulated Composite Roof Panels
  - 5 Aluminium Door, Frame and Windows
  - 6 Aluminium Curtain Walling System

-6 1/2

MICHAEL HYDE AND ASSOCIATES LIMITED  
 chartered architects

REGISTERED OFFICE  
 51 BARTON ARCADE  
 DEANSGATE  
 MANCHESTER M3 2BJ  
 TEL 0161 834 1018  
 FAX 0161 834 4798  
 Manchester@MHA  
 architects.com

ALLIANCE HOUSE  
 LEOPOLD STREET  
 SHEFFIELD S1 2GY  
 TEL 01142 769988  
 FAX 01142 767751  
 Sheffield@MHA  
 architects.com

REVISED 21.08.06 UPPER FLOOR PLAN, ORIENTATION OF ELEVATIONS AND MATERIALS ADDED.

REVISIONS

LADYSMITH ROAD  
 GRIMSBY

DRAWN	DATE	SCALE
TR	JULY 2006	1:100 @ A1
DRAWING	REVISIONS	
3AC1	03	A.F.